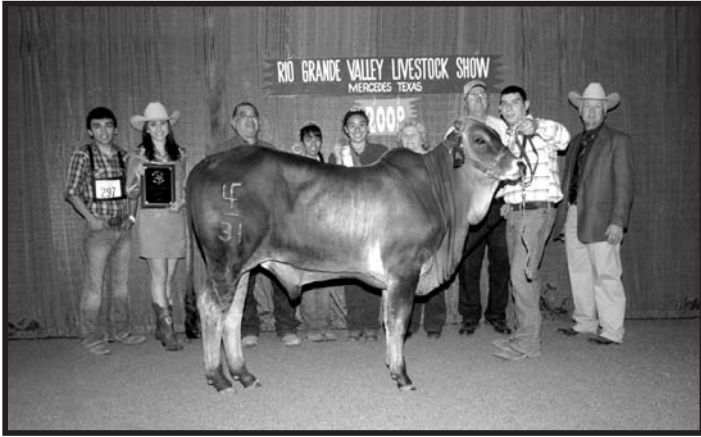




ZEBU DIVISION



The 2009 Rio Grande Valley Livestock Show Grand Champion Bull, Mr. Rio Grand 31, was exhibited by Nancy Finto, Holland, TX. T. J. Gibson Ranch, Quinlan, TX, exhibited the 2009 Rio Grande Valley Livestock Show Grand Champion Zebu Female, Ms. T. J. American Red 616/8.

The Rio Grande Valley Livestock Show will provide Premiums for this Division based on Premium Schedule on page 171.

SPECIAL RULES

1. All entries in the Zebu Show will be subject to the General Show Rules & Regulations of the International Zebu Breeders Association (IZBA).
2. Animals altered in any manner other than de-horning will not be eligible to show.
3. Cow and calf are to be judged as a pair.
4. All bulls 24 months of age or older on show date must have a certificate of fertility issued by a licensed veterinarian available on request.

CLASSES

FEMALES

1. Females calved April 2009 and younger
2. Females calved January - March 2009
3. Females calved October - December 2008
4. CHAMPION JUNIOR FEMALE (1st place winners in classes 1-3 are eligible to compete) - Rosette
5. RESERVE CHAMPION JUNIOR FEMALE (2nd place winner from class that produced Junior Champion eligible to compete) - Rosette

ZEBU DIVISION CONTINUED

6. Females calved July - September 2008
7. Females calved April - June 2008
8. Females calved January - March 2008
9. Females calved July - December 2007
10. Females calved January - June 2007
11. CHAMPION SENIOR FEMALE (1st place winners in classes 6 - 10 eligible to compete) - Rosette
12. RESERVE CHAMPION SENIOR FEMALE (2nd place from class that produced Senior Champion eligible to compete) - Rosette
13. GRAND CHAMPION FEMALE - Plaque
14. RESERVE GRAND CHAMPION FEMALE - Plaque

BULLS:

15. Bulls calved April 2009 or younger
16. Bulls calved January - March 2009
17. Bulls calved October - December 2008
18. CHAMPION JUNIOR BULL (1st place winners from classes 15-17 eligible to compete) - Rosette
19. RESERVE CHAMPION JUNIOR BULL (2nd place winner from class that produced Jr. Champion eligible to compete) - Rosette
20. Bulls calved July - September 2008
21. Bulls calved April - June 2008
22. Bulls calved January - March 2008
23. Bulls calved July - December 2007
24. Bulls calved January - June 2007
25. CHAMPION SENIOR BULL (1st place winners in classes 20-24 are eligible to compete) - Rosette
26. RESERVE CHAMPION SENIOR BULL (2nd place winner from class that produced Senior Champion eligible to compete) - Rosette
27. GRAND CHAMPION BULL - Plaque
28. RESERVE GRAND CHAMPION BULL - Plaque
29. PRODUCE-OF-DAM, Two animals, either sex, produce of one dam, shown in their respective classes, may be owned by different exhibitors, dam's name and IZBA registration number must be stated on entry card.
30. GET-OF-SIRE, Three animals, all by one sire, both sexes represented, shown in their respective classes, may be owned by different exhibitors, sire's name and IZBA registration number must be stated on entry card.