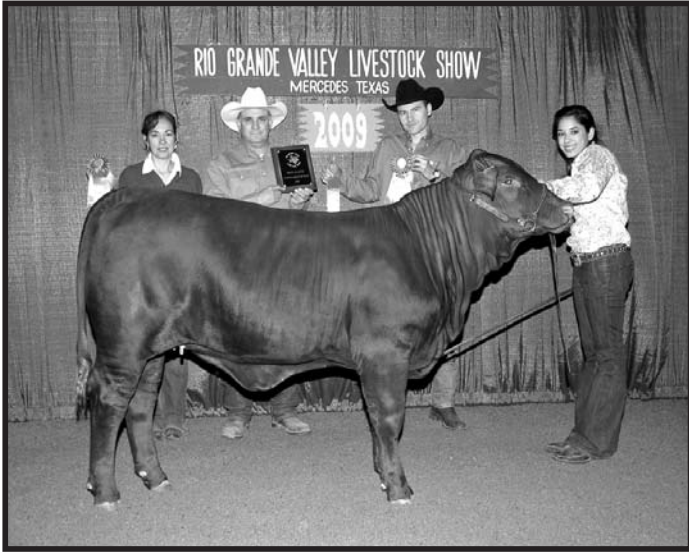




TEXAS STATE CHAMPION SANTA GERTRUDIS DIVISION



The 2009 Rio Grande Valley Livestock Show Grand Champion Santa Gertrudis Female, Schuster Farms 700-0, was exhibited by San Jose Cattle Company, Kingsville, TX. Darrell Pitchford, Athans, TX, exhibited the 2009 Rio Grande Valley Livestock Show Grand Champion Santa Gertrudis Bull, SJ Traveler 603.

The Rio Grande Valley Livestock Show will provide Premiums for this Division based on Premium Schedule on page 171.

SPECIAL RULES

1. Animals entered in this Division must be registered in the herd book of Santa Gertrudis Breeders International and have an official SGBI Registration Certificate to be eligible to show.
2. All animals must be individually identified by tattoo, numerical firebrand or freeze brand.
3. All animals must be exhibited with hair brushed down on the entire body, legs and tail, and with no foreign objects attached to the animals in a manner as to alter the animal's conformation or change its appearance.
4. To be eligible to show in Best of Polled, animals to be slick polled with no scurs, no dehorning and with no evidence of horny tissue. Animals will be inspected by Field Service Representative (if present) assisted by one member of Shows and Exhibits Committee or Breed Standards Committee if needed to settle disputes. If no Field Service Representative is present, it will be done by committee members not involved in that class.

SANTA GERTRUDIS DIVISION CONTINUED

5. Best of Polled Class - All animals that are eligible to be shown as Polled will automatically be eligible to be entered. A separate entry application will not be required, however animals must have been shown in a regular class to be eligible to compete for Best of Polled.

CLASSES

FEMALE

1. Late Junior Heifer Calf calved May 1, 2009
2. Late Junior Heifer Calf calved March 1, 2009 or later
3. Late Junior Heifer Calf calved January 1, to February 28, 2009
4. Late Senior Heifer Calf calved November 1 to December 31, 2008
5. Early Senior Heifer Calf calved September 1 to October 31, 2008
6. CHAMPION HEIFER CALF (heifers from Classes 1-5) - Rosette
7. RESERVE CHAMPION HEIFER CALF (remaining first place Junior Heifer plus second place Heifer from class that produced the Calf Champion - Rosette)
8. Late Summer Yearling Heifer calved July 1 - August 31, 2008
9. Early Summer Yearling Heifer calved May 1 - June 30, 2008
10. Late Junior Yearling Heifer calved March 1 - April 30, 2008
11. Early Junior Yearling Heifer calved January 1 - February 28, 2008
12. CHAMPION YEARLING HEIFER (heifers from classes 8-11) - Rosette
13. RESERVE CHAMPION YEARLING HEIFER (remaining first place Yearling Heifers, plus second place heifer from class that produced the Champion - Rosette)
14. Late Senior Yearling Heifer calved October 1 - December 31, 2007
15. Early Senior Yearling Heifer calved July 1 - September 30, 2007
16. *Late Two Year Old Heifer calved April 1 - June 30, 2007
17. *Early Two Year Old Heifer calved January 1 to March 31, 2007
18. CHAMPION SENIOR FEMALE (from classes 14-17) - Rosette
19. RESERVE CHAMPION SENIOR FEMALE (remaining



first place senior female plus second place heifer from class that produced the Champion - Rosette

20. GRAND CHAMPION (Senior, Yearling and Calf Champion females competing) - Plaque
21. RESERVE GRAND CHAMPION (Senior, Yearling or Calf Champion females plus the Reserve Champion from the class that produced the Grand Champion Female) - Plaque
22. BEST OF POLLED FEMALE AWARD (must be smooth polled with no horny tissue) – Rosette
23. Star 5 Female Show (age same as Open Show) (Classes will be determined after all entries are received.)
24. Grand Champion Star 5 Female - Plaque
25. Reserve Grand Champion Star 5 Female - Plaque

*Must have produced a calf or be safe in calf as verified by a graduate veterinarian.

BULLS

26. Late Junior Bull Calf calved March 1, 2009 or later
27. Early Junior Bull Calf calved January 1 - February 28, 2009
28. Late Senior Bull Calf calved November 1 - December 31, 2008
29. Early Senior Bull Calf calved September 1 - October 31, 2008
30. CHAMPION BULL CALF (from classes 26-29) - Rosette
31. RESERVE CHAMPION BULL CALF (remaining first place bulls plus second place bull from class that produced the Calf Champion) - Rosette
32. Late Summer Yearling Bull calved July 1 - August 31, 2008
33. Early Summer Yearling Bull calved May 1 - June 30, 2008
34. Late Junior Yearling Bull calved March 1 - April 30, 2008
35. Early Junior Yearling Bull calved January - February 28, 2008
36. CHAMPION YEARLING BULL (from classes 32-35) - Rosette
37. RESERVE CHAMPION YEARLING BULL (remaining first place bulls plus second place bull from class that produced the Yearling Champion) - Rosette
38. Late Senior Yearling Bull calved October 1 - December 31, 2007
39. Early Senior Yearling Bull calved July 1 - September 30, 2007
40. Late Two-Year-Old Bull calved April 1 - June 30, 2007
41. Early Two-Year-Old Bull calved January 1 - March 31, 2006
42. Aged Bull calved July 1 - December 31, 2006
43. CHAMPION SENIOR BULL (from Classes 38 - 42) - Rosette

SANTA GERTRUDIS DIVISION CONTINUED

44. RESERVE CHAMPION SENIOR BULL (remaining first place bulls plus second place bull from the class that produced the Senior Champion Bull) - Rosette
45. GRAND CHAMPION BULL (Senior, Yearling and Calf Champion Bulls competing) - Plaque
46. RESERVE GRAND CHAMPION BULL (remaining Senior, Yearling or Calf Champions, plus the Reserve Champion from the classes that produced the Grand Champion Bull) - Plaque
47. BEST OF POLLED AWARD, Male (Must be smooth polled with no horny tissue) - Rosette
48. PRODUCE-OF-DAM: Two offsprings, the produce of one cow, within the age limits or individual classes and must have been exhibited in their respective classes.
49. GET-OF-SIRE: Three animals all by one sire and from at least two dams, both sexes represented, within age limits of individual classes and must have been exhibited in their respective Classes.

TEXAS STATE SUPREME CHAMPION

SANTA GERTRUDIS SHOW

To follow immediately after Texas State Champion Santa Gertrudis Jr. Show.

San Jose Ranch, Kingsville, TX, will present a cash award and a belt buckle to the exhibitor of the Texas State Supreme Champion Female (Grand Champion Female from Open & Jr. Shows will compete)

San Jose Ranch, Kingsville, TX, will present a cash award and a belt buckle to the exhibitor of the Texas State Supreme Champion Bull - (Grand Champion Bull from Open & Jr. Shows will compete)

San Jose Ranch, Kingsville, TX, will present a cash award and a belt buckle to the exhibitor Texas State Supreme Champion Star Five Female (Grand Champion from Open & Jr. Shows will compete).

