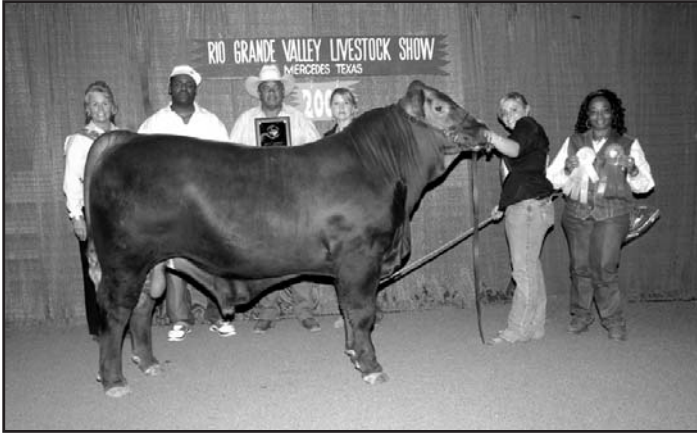




RED BRANGUS DIVISION



The 2009 Rio Grande Valley Livestock Show Grand Champion Red Brangus Bull, Ab4 Paladin 102U, owned by A Bar 4 Ranch, exhibited by Adolphus Gordon, Jr., Arcola, Texas. The 2009 Rio Grande Valley Livestock Show Grand Champion Red Brangus Female, Miss -C- Magic's Princess 30T, was exhibited by Atkinson Cattle Company, owned by Katy Knox.

The Rio Grande Valley Livestock Show will provide Premiums for this Division based on the Schedule on page 171.

SPECIAL RULES

1. Animals must be registered in the ARBA Herd Book and meet the breed's Standards of Excellence.
2. No false tails or tail heads may be used. No animal can be shown that has any foreign objects glued to or otherwise attached in a manner so as to alter its conformation, or change its appearance. The dying or artificial changing of the overall natural color of an animal is prohibited. Animals may not be brindled, black or have excessive white or white in front of the navel. Animals will be solid red with pink nose.
3. Any animal found to have scars or evidence of incision, surgical or otherwise, in the following areas: head, navel, testicles, sheath or dewlap, will be disqualified from showing. All animals must be polled. Surgical removal of scurs is a disqualification.
4. Animals eligible to be shown in group classes must be entered in individual classes.
5. Judging of Red Brangus will be based on "desirable" characteristics as entered into ARBA By-Laws, Article XV - Standard of Excellence for Red Brangus

CLASSES:

FEMALES

1. Heifer calved on or after May 1 - October 31, 2009
2. Heifer calved March 1, - April 30, 2009
3. Heifer calved January 1 - February 28, 2009
4. Heifer calved November 1 - December 31, 2008
5. Heifer calved September 1 - October 31, 2008
6. CHAMPION HEIFER CALF - Rosette
7. RESERVE CHAMPION HEIFER CALF - Rosette
8. Heifer calved July 1 - August 31, 2008
9. Heifer calved May 1 - June 30, 2008
10. Heifer calved March 1 - April 30, 2008
11. Heifer calved January 1 - February 28, 2008
12. CHAMPION JUNIOR HEIFER - Rosette
13. RESERVE CHAMPION JUNIOR HEIFER - Rosette
14. Heifer calved September 1 - December 31, 2006
15. Heifer calved May 1 - August 31, 2007
16. Heifer calved January 1 - April 30, 2007
17. CHAMPION SENIOR HEIFER - Rosette
18. RESERVE CHAMPION SENIOR HEIFER - Rosette
19. GRAND CHAMPION FEMALE - Plaque
20. RESERVE GRAND CHAMPION FEMALE - Plaque

BULLS

21. Bull calved on or after May 1 - October 31, 2009
22. Bull calved March 1 - April 30, 2009
23. Bull calved January 1 - February 28, 2009
24. Bull calved November 1 - December 31, 2008
25. Bull calved September 1 - October 31, 2008
26. CHAMPION BULL CALF - Rosette
27. RESERVE CHAMPION BULL CALF - Rosette
28. Bull calved July 1 - August 31, 2008
29. Bull calved May 1 - June 30, 2008
30. Bull calved March 1 - April 30, 2008
31. Bull calved January 1 - February 28, 2008
32. CHAMPION JUNIOR BULL - Rosette
33. RESERVE CHAMPION JUNIOR BULL - Rosette
34. Bull calved September 1 - December 31, 2007
35. Bull calved May 1 - August 31, 2007
36. Bull calved January 1 - April 30, 2006
37. CHAMPION SENIOR BULL - Rosette
38. RESERVE CHAMPION SENIOR BULL - Rosette



RED BRANGUS DIVISION CONTINUED

39. GRAND CHAMPION BULL - Plaque
40. RESERVE GRAND CHAMPION - Plaque
41. PRODUCE-OF-DAM - 2 animals. Any sex embryo or natural, owned or co-owned by exhibitor
42. GET-OF-SIRE - 3 animals, both sexes represented, no ownership requirement
43. PREMIER BREEDER- 2 animals, any sex, bred and owned or co-owned by exhibitor or immediate family member.

