



OPEN BOER GOAT SHOW

(American Boer Goat Association Sanctioned)

ENTRY DEADLINE ---- FEBRUARY 15

ENTRY FEE\$20.00

Earliest Arrival3:00 P.M. - 8:00 P.M., Friday, March 12
Checked in8:00 a.m. - 11:00 a.m., Saturday, March 13
Judging5:00 P.M., Saturday, March 13
Release of Open Breeding Goats ...9:00 A.M., Sunday, March 14

OPEN SHOW BREEDING GOAT GENERAL RULES

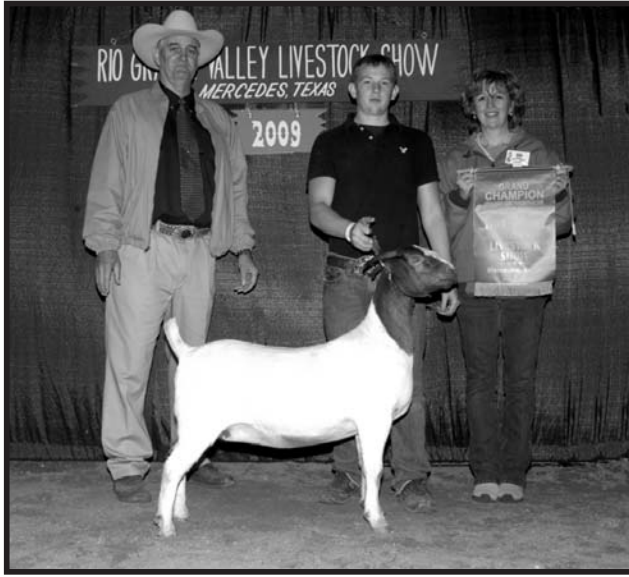
1. All entries in this division shall be subject to the General Rules and Regulations of the Show. Please refer to www.rgvlivestockshow.com for all rules and entry applications.
2. Entry fee of \$20.00 per animal must accompany entry applications. Extra stalls for tack will be \$20.00 each, however due to limited space, stalling of animals will be given preference over tack stalls. Entry fee includes one bag of wood shavings per pen. Junior show exhibitors from Cameron, Hidalgo, Starr and Willacy will be allowed to enter the open show with an additional entry fee of \$10.00, if also entered in the junior breeding show.
3. Entry deadline is February 15, late entries will be accepted until March 1. Late entries postmarked after February 15 and entries that are hand delivered to the Rio Grande Valley Livestock Show office after February 15 must pay a \$30 per head late entry fee if stall space is available. If stall space is unavailable then Management reserves the right to return late entry.
4. Open show substitution deadline is March 1. All open show substitutions received after this date will be charged a \$10.00 substitution fee per entry.
5. Entries must be in the name of the registered owner. Animals must be registered in the Herdbook of their Association in the name of the owner(s) by February 15. Superintendents will check original registration certificates

OPEN BOER GOAT SHOW CONTINUED

- at time of check in. Recognized Associations include American Boer Goat Association and International Boer Goat Association.
6. Age of animals shall be computed from the open show check in date of March 14. Birth dates as listed on the registration certificate will be used to determine class entries. If open show check in date is the same day of the month as the registration date then the animal will be classed in next older age group.
 7. Stalls will be assigned on the basis of number of entries made by an exhibitor, two animals per stall. If at Show, an exhibitor has fewer animals than entered, the Management reserves the right to assign any extra stalls to another exhibitor. No refund of entry or stall fees will be made.
 8. Grooming and trimming tables will be allowed in designated areas at the Show.
 9. Goats must have a legible ear identification number; tattoo or other means of permanent identification that matches the ones on its registration certificate. If the animal has a microchip as its permanent identification, the exhibitor is responsible for providing a microchip reader.
 10. Fitting will be left up to the discretion of the exhibitor. No artificial coloring will be allowed and may be cause of disqualification.
 11. Any female over 24 months of age, that has not kidded, may be cause for that entry to be disqualified.



PERCENTAGE DOES

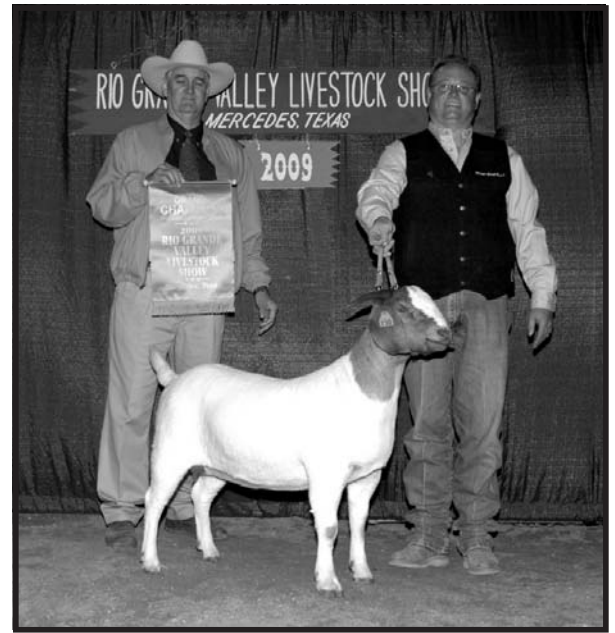


The 2009 Grand Champion Percentage Doe, V X Border Boers Berry's Girl was exhibited by Sam Kroeker, Sharyland 4-H.

- Class 1 - 0 to under 3 months Percentage Doe KidA
- Class 2 - 3 to under 6 months Percentage Doe KidA
- Class 3 - 6 to 9 under months Percentage Doe KidA
- Class 4 - 9 to under 12 months Percentage Doe KidA
- Class 5 - Junior Percentage Doe Kid Champion.....B
- Class 6 - Junior Percentage Doe Kid Reserve ChampionB
- Class 7 - 12 to under 16 months Percentage Yearling Doe.....A
- Class 8 - 16 to under 20 months Percentage Yearling Doe.....A
- Class 9 - 20 to under 24 months Percentage Yearling Doe.....A
- Class 10 - Percentage Yearling Doe Champion.....B
- Class 11 - Percentage Yearling Doe Reserve ChampionB
- Class 12 - 24 to under 36 months Percentage Senior Doe.....A
- Class 13 - 36 months plus Percentage Senior DoeA
- Class 14 - Percentage Senior Doe Champion.....B
- Class 15 - Percentage Senior Doe Reserve ChampionB
- Class 16 - Grand Champion Percentage DoeC, Banner
- Class 17 - Reserve Grand Champion Percentage Doe...C, Banner



FULLBLOOD/PUREBRED DOES



The 2009 Grand Champion Fullblood Doe, MCR Outlandish Event, was exhibited by Ervin Chavana, Boerne, Texas.

- Class 18 - 0 to under 3 months Purebred Doe KidA
- Class 19 - 3 to under 6 months Purebred Doe KidA
- Class 20 - 6 to under 9 months Purebred Doe KidA
- Class 21 - 9 to under 12 months Purebred Doe KidA
- Class 22 - Purebred Doe Kid ChampionB
- Class 23 - Purebred Doe Kid Reserve Champion.....B
- Class 24 - 12 to under 16 months Purebred Yearling Doe.....A
- Class 25 - 16 to under 20 months Purebred Yearling Doe.....A
- Class 26 - 20 to under 24 months Purebred Yearling Doe.....A
- Class 27 - Purebred Yearling Doe Champion.....B
- Class 28 - Purebred Yearling Doe Reserve ChampionB
- Class 29 - 24 to under 36 months Purebred Senior Doe.....A
- Class 30 - 36 months plus Purebred Senior Doe.....A
- Class 31 - Purebred Senior Doe Champion.....B
- Class 32 - Purebred Senior Doe Reserve ChampionB
- Class 33 - Grand Champion Purebred DoeC, Banner
- Class 34 - Reserve Grand Champion Purebred Doe.....C, Banner





FULLBLOOD/PUREBRED BUCKS



Richard Labunski, Harlingen, TX, exhibited the 2009 Grand Champion Fullblood Buck, JWN Codi Sly Surprise SA

- Class 35 - 0 to under 3 months Purebred Buck KidA
- Class 36 - 3 to under 6 months Purebred Buck KidA
- Class 37 - 6 to under 9 months Purebred Buck KidA
- Class 38 - 9 to under 12 months Purebred Buck KidA
- Class 39 - Purebred Buck Kid ChampionB
- Class 40 - Purebred Buck Kid Reserve Champion.....B
- Class 41 - 12 to under 16 months Purebred Yearling BuckA
- Class 42 - 16 to under 20 months Purebred Yearling BuckA
- Class 43 - 20 to under 24 months Purebred Yearling BuckA
- Class 44 - Purebred Yearling Buck ChampionB
- Class 45 - Purebred Yearling Buck Reserve Champion.....B
- Class 46 - 24 to under 36 months Purebred Senior BuckA
- Class 47 - 36 months plus Purebred Senior Buck.....A
- Class 48 - Purebred Senior Buck ChampionB
- Class 49 - Purebred Senior Buck Reserve Champion.....B
- Class 50 - Grand Champion Purebred BuckC, Banner
- Class 51 - Reserve Grand Champion Purebred Buck....C, Banner

General Rules, Regulations and Procedures on Page 42 also apply.

SCHEDULE OF PREMIUM AWARDS

Premiums will be paid as follows:

Rio Grande Valley Livestock Show	\$2,400
American Boer Goat Association	\$300
Valley Goat Breeders Association.....	\$1,350
Maximum Premiums available.....	\$4,050

Award A

1st Place - \$50 2nd Place - \$35 3rd Place - \$15
(100 entries or greater total for show)

1st Place - \$30 2nd Place - \$20 3rd Place - \$10
(Less than 100 entries total for show)

Award B

Division Champion - Rosette & Trophy

Reserve Division Champion - Rosette

Award C

Grand Champion - \$300 & Banner

Reserve Grand Champion - \$150 & Banner

Banners Sponsored by

M V J Boer Goats, Joe & Iris Perez, Santa Rosa

DIVISION PREMIUM SPONSORS

**FERN & CANDISS MONTES
RICHARDS AND
KROEKERGOATS.COM
LYSSY & ECKEL**

