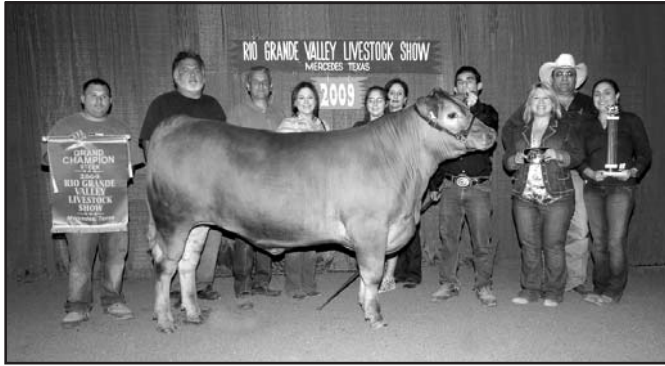




MARKET STEER DIVISION



Jose Miguel Alvarez, a Rio Grande City FFA member, exhibited the 2009 Rio Grande Valley Livestock Show Grand Champion Steer. Champs for Champions purchased the steer for \$21,000.

Entry DeadlineJanuary 15
 Entry Fee\$20.00
 Delivery to Show Grounds.....
 12 Noon to 6:00 PM, Monday, March 15
 8:00 AM to 12:00 Noon, Tuesday, March 16
 Weighing/Sifting/Classifying.....4:00 PM, Tuesday, March 16
 Judging8:00 AM, Friday, March 19
 Load Out12:00 Noon, Sunday, March 21

MARKET STEER DIVISION RULES

Notice to Exhibitors: All Market Steers, including sifted steers, must be consigned by the exhibitor to the processing plant, individual, etc. who places the highest bid with the Show Management. Violation of this rule will result in exhibitor being barred from future shows.

1. All steers must have been validated on or before July 1, 2009, with a legible nose print, ear tag, ear tattoo, and completed Validation Form. Validation tags must be in steers' ear prior to arriving on showgrounds. Steers without an official Texas Steer Validation will be ineligible to show.

MARKET STEER DIVISION CONTINUED.....

2. Each exhibitor must be a bona fide member of a 4-H club or FFA chapter and be enrolled in elementary, secondary or home school in Cameron, Willacy, Starr or Hidalgo County and in their respective FFA chapter or 4-H club by November 1, 2009 thru the Show period.
3. Exhibitors must be in the third grade or at least nine years old, but under 20 years of age as of January 1, 2010.
4. All steers must be the bona fide property of the exhibitor and continuously cared for by the exhibitor from July 1, 2009, thru the Show date, under the supervision of AST, CEA or 4-H club manager.
5. An exhibitor may enter only one steer. Number of State validation tag, breed of steer and Breed of sire and dam must be shown on the entry application .
6. Any animal, which is found to have been entered in another show under a different exhibitor's name, other than the name entered in this Show, will be declared ineligible. Any animal that has gone through the auction at another show is ineligible for this Show. Market Steers found to have evidence of more than one validation, will be ineligible to show unless the proper Change of Ownership Forms are recorded, reflecting why there is evidence of more than one validation and that the previous validation(s) have been canceled.
7. Any steer showing more than normal fill at weighing time will be sifted by Show Officials.
8. The act of artificially filling animals internally by stomach pumping, is prohibited and will result in disqualification of the animal.
9. Steers must meet the following requirements or be sifted:
 - A. Must weigh at least 1,050 pounds. There will be no top weight limit.
 - B. Must be creditable from standpoints of types, quality finish and breed characteristics.
 - C. Must be free of grub or grub damage.
 - D. Must be dehorned and show no secondary horn growth.
 - E. Must be trained to lead and handle properly. Nose leads will be permitted during sifting. Any steer that is wild or requires handling by more than one person at weighing and sifting may be sifted. During the show, such animals may be removed from the ring.
 - F. All steers must be shorn prior to arrival at the Show grounds. Hair must not exceed 1/4 inch on any location of the body excluding the tail switch. No trimming on the grounds with power equipment will be permitted.



10. A steer, which in the opinion of the Classifiers does not have predominant breed characteristics of the class in which it is entered, may be sifted from the Show or with the approval of the Division Superintendent and Show Management moved by the Classifiers to the class which in their opinion the animal is eligible to be entered.
11. No change of the major color pattern of a steer by painting or dying will be allowed. Any steer groomed with material that allows color to come off the steer will not be allowed in the Show.
12. Decision of Official Veterinarian, classifier and/or sifter will be final and no protests will be considered by the Show Management.
13. Steers may be designated for re-weighing during judging at a time determined by the Steer Superintendent. Any steer weighing more than 5% above his initial official show weight will become ineligible for any award or placing.
14. No one but exhibitors and Show Officials will be allowed in the show ring or on the Arena Director's stand during sifting and judging. There is to be no feeding, drenching or watering in the arena during the judging.
15. Steers *must* remain in their assigned stalls from 9:00 a.m. to 6:00 p.m. except during sifting and judging and being prepared for judging.
16. Crossbreed is defined as a steer whose sire and dam are of different breeds.
17. After sifting and weighing, steers will be divided by the following breeds: Brahman and Brahman Hybrid, Santa Gertrudis and Santa Gertrudis Crossbreeds, Simbrah, ABC (American Breeds & Crossbreeds), Charolais & Charolais Crossbreeds, Maine Anjou, AOB (British & European Breeds,) and put in classes as nearly equal in number as possible according to the following schedule. All steers of the same weight will be put in the lower weight group.

1 - 10 entries	1 class
11 - 20 entries	2 classes
21 - 35 entries	3 classes
36 - 50 entries	4 classes
51 & Over	5 classes
18. All Market Steers will be sold to the person or company submitting the highest bid. Sifted steers will not be allowed to leave the showgrounds and will be sold with steers that compete. Exhibitors of sifted steers must feed and care for their steer during the entire Show until they are loaded out with all other market steers.
19. First place steers in each breed class will compete for Breed Champion, second place winner in class which produced the Breed Champion will compete with remaining first place steers of the breed for Reserve Breed Champion.

MARKET STEER DIVISION CONTINUED

20. The Steer Committee may collect a hair and/or blood sample from any steer entered in the Show for the purpose of conducting a DNA analysis. Any steer not having a positive match from the DNA analysis of this hair sample compared to the DNA analysis of the hair sample taken from it at the time of enrollment in the validation program will be disqualified.

STEER CLASSES

Eligibility for the following classes will be based solely on visible characteristics as determined by classifier(s) appointed by the Show management. (See Rule 9)

BRAHMAN AND BRAHMAN HYBRID STEERS

Steers must show a predominance of Brahman characteristics indicating the animal is 50% or more Brahman.

**SANTA GERTRUDIS & SANTA GERTRUDIS
CROSSBRED STEERS**

Steers must show a predominance of Santa Gertrudis characteristics indicating the animal is 50% or more Santa Gertrudis.

SIMBRAH STEERS

Steers must have a minimum of ¼ and/or a maximum of ¾ Simmental and Brahman characteristics and features with no other breed represented. No identification or registration numbers will be required.

ABC STEERS (AMERICAN BREEDS AND CROSSES)

This Class will encompass the American Breeds and their Crosses such as Brahman, Brahmousin, Red Brangus, Black Brangus, Charbray, and Beefmaster.

**CHAROLAIS AND CHAROLAIS CROSSBREED
STEERS**

Steers must show a predominance of Charolais characteristics indicating the animal is 50% or more Charolais.

MAINE-ANJOU STEERS

Steers must be ½ blood or more Maine-Anjou and must exhibit predominant characteristics of the breed.

AOB STEERS (ALL OTHER BREEDS)

This Class will encompass those steers that have European and British bloodlines and all crosses between them with no visible evidence of Brahman blood allowed. Breed of sire and dam must be shown on the entry application.

- | | |
|-------------------------------|------------------------------|
| Breed Champions..... | Rosette |
| Reserve Breed Champions | Rosette |
| Grand Champion | Belt Buckle, Trophy & Banner |
| Reserve Grand Champion..... | Trophy & Banner |



(Reserve Champion of breed that furnished the Grand Champion will compete with remaining Breed Champions for Reserve Grand Champion.)

General Rules, Regulations and Procedures on page 42 also apply.

SCHEDULE OF PREMIUM AWARDS

Premium will be based on the number of head showing in each class:

- 1 - 10 EntriesTo 5th Place
- 11 - 20 Entries..... To 10th Place
- 21 - 30 EntriesTo 15th Place
- Over 30 EntriesTo 20th Place

<u>PLACING</u>	<u>PREMIUM</u>
1.....	\$50
2.....	\$49
3.....	\$48
4.....	\$47
5.....	\$46
6.....	\$45
7.....	\$44
8.....	\$43
9.....	\$42
10.....	\$41
11.....	\$40
12.....	\$39
13.....	\$38
14.....	\$37
15.....	\$36
16.....	\$35
17.....	\$34
18.....	\$33
19.....	\$32
20.....	\$31

STEER DIVISION SHOWMANSHIP

SPONSORED BY:



All exhibitors of steers are eligible to compete. Exhibitors will be divided into three age groups. Exhibitor must show his or her own steer.

- 8 to 11 years of age
- 12 to 14 years of age
- 15 years old and over
- As of day of contest

Awards will be made on the basis of showmanship, neatness of exhibitor, show condition and behavior of animal. Prizes will be awarded in each age group as follow:

- 1st place\$150.00 and Belt Buckle
- 2nd place\$125.00 and ribbon
- 3rd place\$100.00 and ribbon
- 4th place\$75.00 and ribbon
- 5th place\$50.00 and ribbon

