



MARKET GOAT DIVISION



The 2009 Rio Grande Valley Livestock Show Grand Champion Market Goat was exhibited by Grace Welch, a member of Sharyland 4-H. Champs for Champions purchased the goat for \$6,000.

| | |
|-----------------------------------|--|
| Entry Deadline..... | January 15 |
| Entry Fee | \$10.00 |
| Delivery to Show Grounds..... | |
| | 12 Noon to 6:00 PM, Monday, March 15 |
| | 8:00 AM to 12:00 Noon, Tuesday, March 16 |
| Weighing/Sifting/Classifying..... | |
| | 4:00 PM to 7:00 PM, Tuesday, March 16 |
| Judging | 1:00 PM, Wednesday, March 14 |
| Load Out | 2:00 PM, Sunday, March 21 |

MARKET GOAT DIVISION RULES

Notice to Exhibitors: All Market Goats, including sifted goats must be consigned by the exhibitor to the processing plant, individual, etc. who places the highest bid with the Show Management. Violation of this rule will result in exhibitor being barred from future shows.

Sexually intact goats or sheep brought to the show grounds must have a Premise ID Tag issued by the Texas Animal Health Commission. If an exhibitor has purchased a project from a breeder the breeder should supply the Premise ID Tag.

1. Each exhibitor must be a member of a 4-H club or FFA chapter and be enrolled in elementary, secondary or home school in Cameron, Hidalgo, Starr or Willacy County and in their respective FFA chapter or 4-H club from November 1, 2009, thru the Show period.
2. Exhibitors must be in the third grade or nine years old but less than 20 years of age as of January 1, 2010.
3. All goats must be the bona fide property of the exhibitor and continuously fed and cared for by the exhibitor from October 31, 2009 thru the Show date under the supervision of an AST, CEA or 4-H club manager.
4. Goats may be of any breed or crossbreed, a wether or unbred doe.
5. All male goats must be castrated by January 1, 2010.
6. All goats must be validated by October 31, 2009.
7. An exhibitor may enter only one goat.
8. Any animal found to have been entered in another show under a different exhibitor's name other than the name entered in this Show and/or any animal which has gone thru the auction at another show will be ineligible for this Show. Any goat found to have evidence of more than one validation, will be ineligible to show unless the proper Change of Ownership forms are received, reflecting why there is evidence of more than one validation and that the previous validation(s) have been canceled.
9. Goats must meet the following requirements or be sifted.
 - A. Must weigh at least 60 pounds. Maximum weight for all goats will be 115 pounds.
 - B. Any goat that has had its natural musculature or weight altered by use of injections or ingested material not conducive of the continued health of goats or marketability of goat carcasses will be sifted.
 - C. All goats must be slick shorn from the hock up with 3/8 inch of hair or less.
 - D. Sharp or pointed horns must be clipped or rounded or sanded to the size of a dime or larger to meet the approval of the Goat Committee prior to going thru the sift.
 - E. Goats must be creditable from standpoint of quality, finish and not have been mutilated in any way at time of sifting.
 - F. Exhibitors must have a collar or halter on their goat at all times during weighing and sifting.
10. Chokers with spikes will not be permitted during sift or during judging.
11. The decision of the sifters will be final. Protest will not be accepted on sifter's opinion.



MARKET GOAT DIVISION CONTINUED...

12. After sifting, goats will be divided into four weight divisions as nearly equal as possible. Each weight division will then be divided into four classes as nearly equal in number as possible. All goats of the same weight will be put in the same weight group.
13. All Market Goats will be sold to the person or company submitting the highest bid. Sifted goats will not be allowed to leave the showgrounds and will be sold with goats that compete. Exhibitors of sifted goats must feed and care for their goat during the entire Show until they are loaded out with all other market goats.
14. First place goats in each class will compete for Division Champion, 2nd place winners in class that produced the Division Champion will compete with remaining 1st place class goats for Division Reserve Champion. Grand Champion Goat (four Division Champions competing). Reserve Grand Champion Goat (Reserve Champion of Division that furnished the Grand Champion eligible to compete with the 3 remaining division champions).
 Division ChampionsRosette
 Reserve Division Champions.....Rosette
 Grand Champion.....Belt Buckle, Trophy & Banner
 Reserve Grand ChampionTrophy & Banner
15. Top Four (4) placing goats in each class of each weight division may be designated for re-weighing during judging at a time determined by the Goat Superintendent. Any goat weighing more than five (5) pounds above his initial official show weight will become ineligible for any award or placing.
 The Goat Committee may collect hair and/or blood samples from any goat entered in the Show for the purpose of conducting a DNA analysis. Any goat not having a positive match from the DNA analysis of the hair and/or blood samples compared to the DNA analysis of the hair and/or blood samples taken from it at the time of enrollment in the state validation program will be disqualified

General Rules, Regulations and Procedures on page 42 also apply.



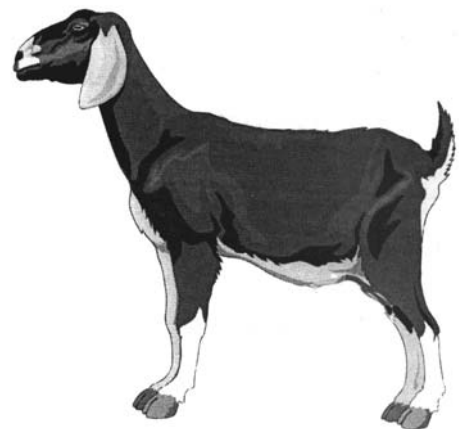
116

SCHEDULE OF PREMIUM AWARDS

Premium will be based on the number of head showing in each class:

- 1 - 10 Entries To 5th Place
- 11 - 20 Entries To 10th Place
- 21 - 30 Entries..... To 15th Place
- Over 30 Entries To 20th Place

| <u>PLACING</u> | <u>PREMIUM</u> |
|----------------|----------------|
| 1 | \$35 |
| 2 | \$34 |
| 3 | \$33 |
| 4 | \$32 |
| 5 | \$31 |
| 6 | \$30 |
| 7 | \$29 |
| 8 | \$28 |
| 9 | \$27 |
| 10 | \$26 |
| 11 | \$25 |
| 12 | \$24 |
| 13 | \$23 |
| 14 | \$22 |
| 15 | \$21 |
| 16 | \$20 |
| 17 | \$19 |
| 18 | \$18 |
| 19 | \$17 |
| 20 | \$16 |



117

